

Remedial Investigation/Feasibility Study
Former Camp Croft, Spartanburg, SC
Historic Findings

Project Number 00017	Date JULY 2013	Exhibit 2-5
-------------------------	-------------------	----------------

KEY

- MD
- MEC
- UXO
- Small Arms Concentrations
- Historical Points
- Historical Ranges
- Former OOU
- MRS
- Approximate Croft State Natural Area Boundary
- Approximate Former Camp Croft Boundary

N

W

E

S

07501,500 Feet

Source(s)
USAESCH, Esri, ZAPATA

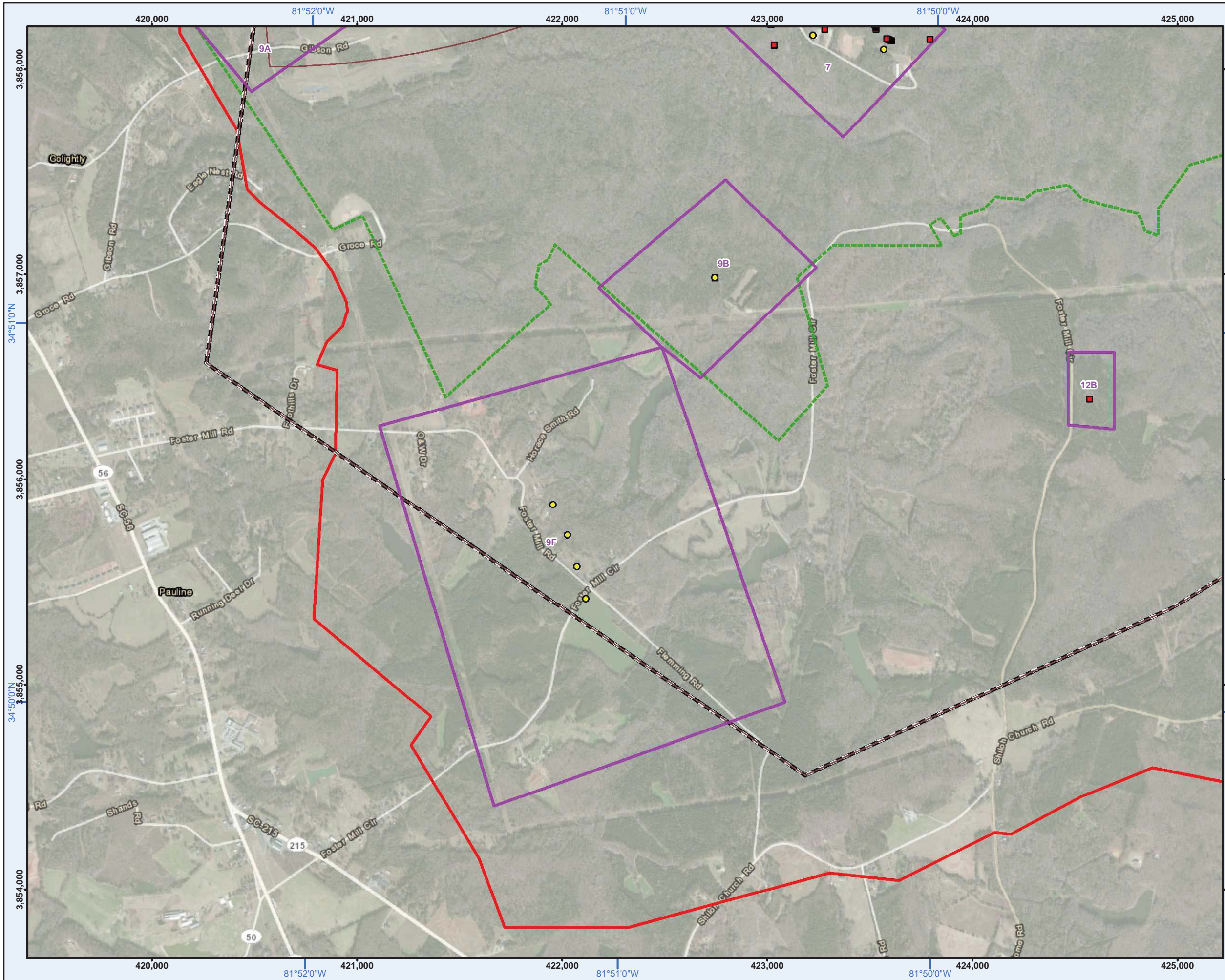
Projection
NAD 1983 UTM Zone 17N

Notes
Red symbol denotes MEC/UXO item.

Engineering scale may only be accurate on a map size of 11 x 17.

Checked By JES	Engineering Scale 1"=1,500'	Drawn By ATD/EAA
-------------------	--------------------------------	---------------------

U.S. Army Corps of Engineers
Engineering and
Support Center Huntsville
4820 University Square
Huntsville, AL 35816



Remedial Investigation/Feasibility Study
Former Camp Croft, Spartanburg, SC
Historic Findings

Project Number 00017	Date JULY 2013	Exhibit 2-6
-------------------------	-------------------	----------------

KEY

- MD
- MEC
- Historical Ranges
- Former OOU
- MRS
- Approximate Croft State Natural Area Boundary
- Approximate Former Camp Croft Boundary

N
W E
S

0 750 1,500 Feet

Source(s)
USAESCH, Esri, ZAPATA

Projection
NAD 1983 UTM Zone 17N

Notes
Red symbol denotes MEC/UXO item.

Engineering scale may only be accurate on a map size of 11 x 17.

Checked By JES	Engineering Scale 1"=1,500'	Drawn By ATD/EAA
-------------------	--------------------------------	---------------------

U.S. Army Corps of Engineers
Engineering and
Support Center Huntsville
4820 University Square
Huntsville, AL 35816